

Shift in emphasis away from the relationship between parents and schools

Focus on relationship between parents and their child's learning

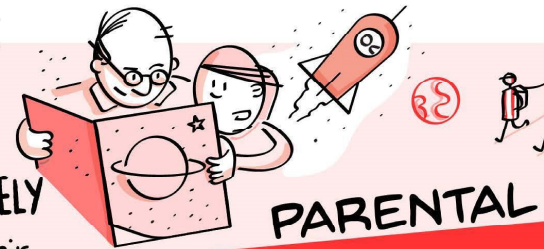


**PARENTS INVOLVED** in the LIFE and WORK of the SCHOOL



Builds on what families already do to help children's learning

**PARENTS ACTIVELY INVOLVED** in their CHILD'S LEARNING



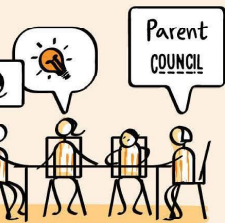
**PARENTAL**

**engagement**

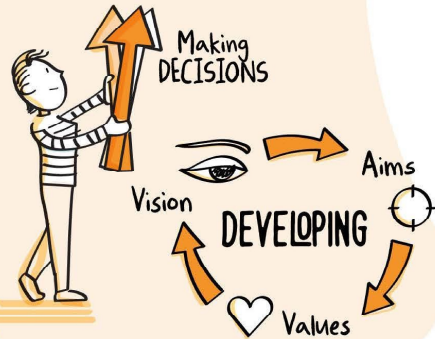
Supportive home learning environment

**PARENTAL involvement**

Parents and teachers working as partners



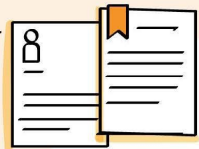
Parent COUNCIL



Working GROUPS



Reviewing POLICIES and CURRICULUM



PLANNING IMPROVEMENT



**FAMILY Learning**

FAMILIES LEARNING TOGETHER

ASPIRATIONS



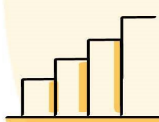
SCHOOL



OUTDOORS



Intergenerational LEARNING



Progression

SHARED ACTIVITIES are designed to enable parents to learn how to support their child's learning



ADULT LEARNING



OUTCOME-FOCUSED



Inclusive



ACHIEVEMENT



MEANINGFUL and planned



Including organised or active learning opportunities

LEARNING

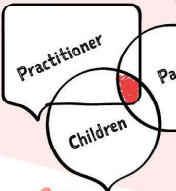
at

**home**

Everyday activities



THE LEARNING which HAPPENS in the HOME, OUTDOORS and/or in the COMMUNITY



Practitioner

Children

Supported by di...