

Be the Best You Can Be

WILLIAMSTON PRIMARY SCHOOL VALUES

**RESPECT** *for yourself, others and the environment*

**RESPONSIBILITY** *for all of your actions*

**KINDNESS ALWAYS**

Williamston Primary School

New Intake Information Meeting  
for P1 intake August 2026



# Welcome!

Head Teacher -  
Jane Livingston

Depute Head  
Teacher –  
Maree Young

Principal  
Teacher – Roisin  
Thomson



## Purpose of tonight's meeting

This is an information evening to give parents the opportunity to have a tour of the school, meet the leadership team, listen to information regarding the school, ask any questions you may have before completing the on-line application form if you have not done so already.

## Williamston - The Rationale for our Curriculum (based on pupil, parent and staff consultations)

### The Four capacities of the Curriculum for Excellence

Successful Learner Confident Individuals Responsible Citizens Effective Contributors



#### Vision

As a Right's Respecting School, we work together to provide a happy, safe, nurturing and stimulating environment for all learners.  
**#BE THE BEST YOU CAN BE**

#### Our Key Drivers

Our diverse school  
Outdoor learning at WPS  
Learning for sustainability

#### Ideal Learning in Williamston happens when:

- Children lead their own learning through responsive planning and in collaboration with others
- Opportunities are given to work and play independently and collaboratively
- Children are engaged and motivated in their learning
- Learning and play is experiential, active and purposeful
- We use the natural environment and outdoors whenever possible
- Learning provides challenge and is differentiated
- We nurture the whole child and create nurturing caring and supportive learning environment.
- There are opportunities for creativity.

agile encouraging relationships  
positive  
play  
diversity  
respect  
fun  
relationships  
support  
exploring  
challenge  
responsibility  
achievement  
learning  
personalised  
safe  
inspiring  
connecting  
transitions

#### Principles for Curriculum Design:

- challenge and enjoyment
- breadth
- progression
- depth
- personalisation and choice
- coherence
- relevance

#### Our School Values.

All of our curriculum activities, programmes and opportunities for learning aim to provide our learners, parents and staff to develop and exemplify our CORE values:

**Respect ~ Responsibility ~ Kindness**

- *Respect for yourself, others and the environment*
- *Responsibility for your actions*
- *Kindness always*





# How Good Is Our School 4

What is our capacity for improvement?		
Leadership and management	Learning provision	Successes and achievements
How good is our leadership and approach to improvement?	How good is the quality of the care and education we offer?	How good are we at ensuring the best possible outcomes for all our learners?
<b>1.1</b> Self-evaluation for self-improvement <b>1.2</b> Leadership of learning <b>1.3</b> Leadership of change <b>1.4</b> Leadership and management of staff <b>1.5</b> Management of resources to promote equity	<b>2.1</b> Safeguarding and child protection <b>2.2</b> Curriculum <b>2.3</b> Learning, teaching and assessment <b>2.4</b> Personalised support <b>2.5</b> Family learning <b>2.6</b> Transitions <b>2.7</b> Partnerships	<b>3.1</b> Improving wellbeing, equality and inclusion <b>3.2</b> Raising attainment and achievement <b>3.3</b> Increasing creativity and employability



Based on our own  
self-evaluation,  
HMle input and Central Team Support

HIGIOS 4 Indicator	Core QI	School Self Evaluation
1. Leadership of change	*	Very Good 23/24 and 24/25
2.3 Learning , teaching and Assessment	*	Very Good 23/24 and 24/25
3.1 Ensuring wellbeing, equity and inclusion	*	Very good 23/24 and 24/25
3.2 Raising attainment and achievement	*	Very Good 23/24 and 24/25



# Current Class Structure This Session

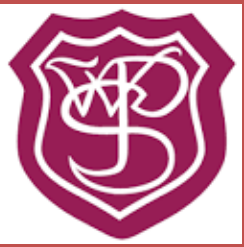
- 15 classes across the school, approx. 425 pupils in school and 75 in ELC
- Sometimes composites – these are regular feature in lower school.
- Probationer teachers.
- Support for Learning Teacher.
- PE specialist for all classes.
- Reduced Class Contact Time (RCCT)
- Brass and wind for upper school P5-7.
- Pupil Support Worker team to assist with learning, beginning/end of day.

# Summary of our priorities for this session -

- Health and wellbeing – review of HWB curriculum; Building Resilience; mindfulness; Positive Relationship Policy reviewed alongside equality and diversity, antibullying and technology in schools; peer mediation programme; pupil voice.
- Literacy and numeracy/maths – review of programmes; moderation of writing and numeracy; refresh of approaches to teach numeracy
- Skills for learning, life and work – STEM (Science, Technology, Engineering, Maths) project P5-7; Young Leaders P5; cluster approaches to developing young workforce; profiling





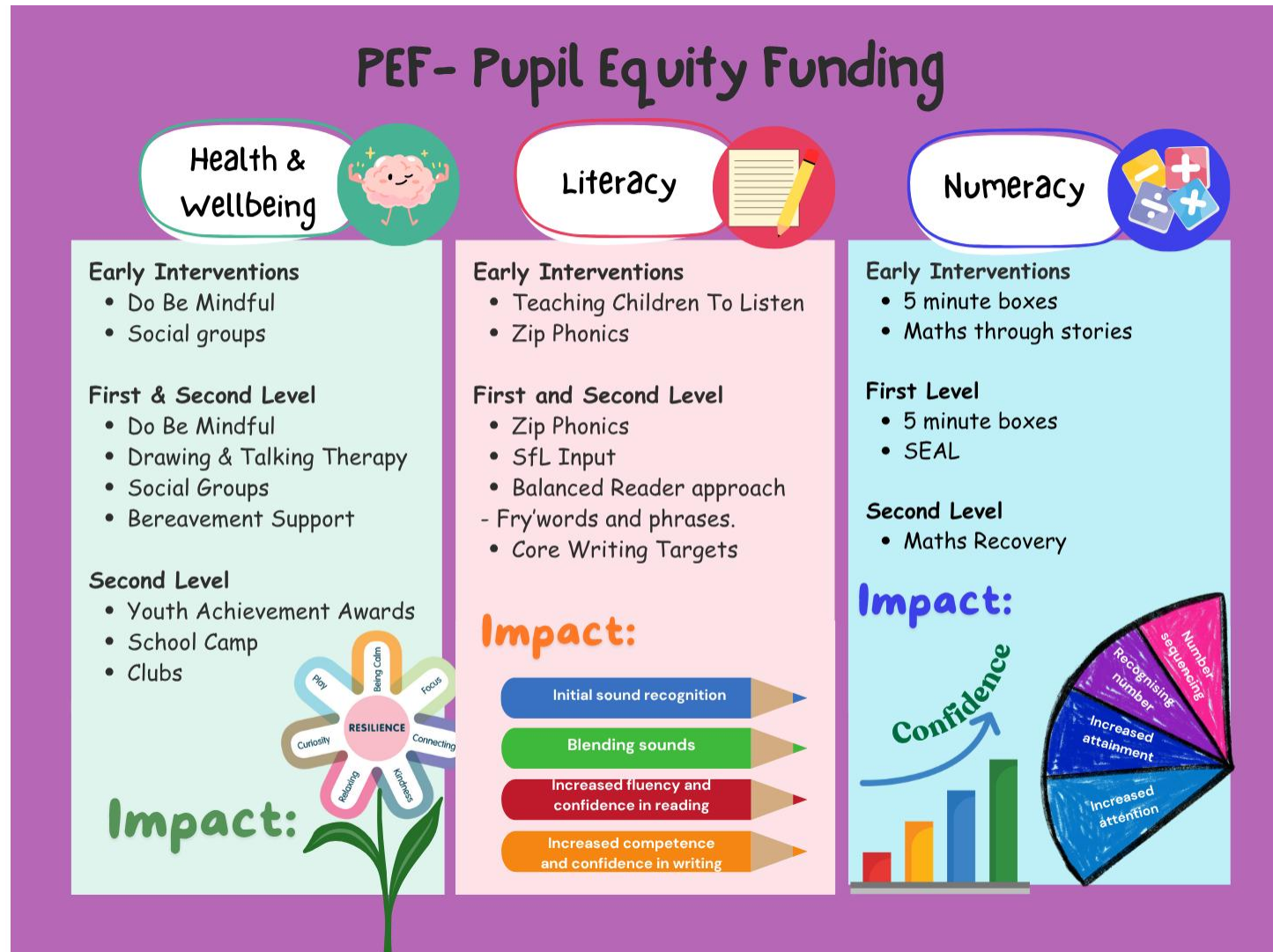


# Family Learning and Parental Engagement

- Meet the teacher
- P1&2 Literacy and Numeracy Learning through play followed by shared learning visit to classes
- Health and Wellbeing information event
- How we support meeting learner needs
- Shared starts and shared finishes
- DYW/Careers event
- Our diverse school expressive arts/1+2/instrumental music event
- P1 Nativity; P2-P6 assemblies; P7 graduation

DATES ARE SENT OUT ON PARENT CALENDAR  
EACH AUGUST

# What are we doing for our PEF families and learners?





# Making an Application

- P1 introductory letters for pre-school children are issued through nurseries to those residing within the West Lothian Council boundary, to parents of the children named on each letter. The application is completed through the primary on-line form to be considered for a P1 placement from August 2026 at <https://www.westlothian.gov.uk/primaryapplication>.
- Each cover letter advises the parent that their child is eligible to start Primary 1 in August 2026 and informs them to complete the enclosed application pack and return to pupil placement before the 31 December 2025

## **P1 intake for August 2026 timeline**

- Introductory letters issued to pre-school children - beginning of November 2025
- Closing date for submission 31 December 2025 to allow processing and administration of all submitted applications.
- Legal closing date for submission March 2026 (No application will be considered before this date)
- 1<sup>st</sup> School Placement Panel Meeting will take place as soon as possible after the legal closing date, where they determine which schools are oversubscribed. For those schools determined as oversubscribed, the Panel will also decide which children will receive the letter to advise this. This letter will be issued 1<sup>st</sup> class to allow them to present any further information by the closing date stated in the letter that they wish the Panel to be aware of before making a decision on their application at the 2<sup>nd</sup> meeting. All other applicants received by mid March 2026 for this school will be issued grant letters before the end of April 2026.
- All schools determined as not oversubscribed will have grant letters issued to all applicants received by mid March 2026 before the end of April 2026.
- 2<sup>nd</sup> School Placement Panel Meeting will take place as soon as possible after the closing date stated in the oversubscribed letter. The panel will consider all applicants who had been issued oversubscribed letters and determine these applications. Both Grant and Refusal decisions from this meeting will have letters issued before the end of April 2026.

**Sometimes you will have the granted letter before the school has an initial list of those granted a place! It can be into May before we have this information.**



## In brief...

- All information on named letters issued via nursery November 2025.  
Applications to be completed through on-line form  
<https://www.westlothian.gov.uk/primaryapplication>.
- School office will hold 5 blank primary applications.
- Key date for application - returned to pupil placement before the 31 December 2025.
- Decisions made March/April 2026.
- Schools receive granted lists April/May 2026.
- You may know before us!
- <https://www.westlothian.gov.uk/apply-for-a-primary-school-place>



# Deferring the start date

## **P1 deferral from August 2026 to August 2027 dates (Additional advantage year of early learning & childcare)**

- Introductory letters issued to pre-school children - beginning of November 2025. Information on this letter.
- Apply for both a P1 place AND an additional year just in case
- Keep an eye on the application page of the WLC website.
- If your child is not 5 on the day they are due to start P1 school, they are entitled to an additional nursery year.
- Parents must complete an additional year application form to be considered for this.
- Grant or refusal letters will be issued before the end of March 2026.
- The policy for this process is online, or parents can request a paper copy.



# Induction Process

Once our numbers are confirmed, we contact Nurseries for any further information on specific pupils. **This is likely to be after the Easter break.**

P1 teachers to visit pupils in nursery setting where possible – June.

Parent Information Evening Tuesday 12<sup>th</sup> May 2026 for families granted a place here.

Pupils allocated places visit Wednesday 17<sup>th</sup> June 2026 – class visit and a shared lunch.



## The Tour

Best people to share the story of the school are our pupils.

P7s show groups of parents around our school. Please ask questions of them.

HT, DHT and PT available for questions also in the small hall.